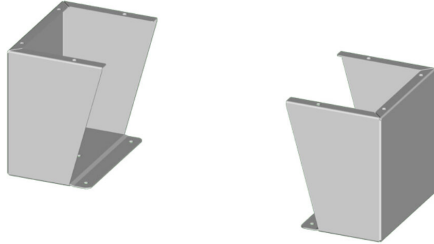


SCE-FK2412SS Cut Sheet



Saginaw floor stand kit, 24in height, 304 stainless steel, #4 brush finish. For use with 12in deep enclosures. Includes (2) floor stands and mounting hardware.

For complete product information, please see this item on our store at the following link:



<https://www.automationdirect.com/pn/SCE-FK2412SS>

Technical Specifications

Brand	Saginaw
Item	Floor stand kit
Height	24in
Width	9.13in
Depth	12in
Material	304 stainless steel
Finish	#4 brush
For Use With	12in deep enclosures
Kit Includes	(2) floor stands and mounting hardware

Agency Approvals

UL Listed File #	None
UL Recognized File #	None
UL Hazardous File #	None
CE	None
CSA File #	None
RoHS Status	Meets RoHS Chemical Restrictions - No CE (See RoHS Statement Below)
EU REACH	View EU REACH document
Other	RoHS Statement