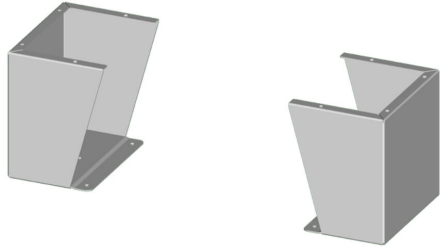


# SCE-FK2412SS6 Cut Sheet



Saginaw floor stand kit, 24in height, 316L stainless steel, #4 brush finish. For use with 12in deep enclosures. Includes (2) floor stands and mounting hardware.

For complete product information, please see this item on our store at the following link:



<https://www.automationdirect.com/pn/SCE-FK2412SS6>

## Technical Specifications

<b>Brand</b>	Saginaw
<b>Item</b>	Floor stand kit
<b>Height</b>	24in
<b>Width</b>	9.12in
<b>Depth</b>	12in
<b>Material</b>	316L stainless steel
<b>Finish</b>	#4 brush
<b>For Use With</b>	12in deep enclosures
<b>Kit Includes</b>	(2) floor stands and mounting hardware

## Agency Approvals

<b>UL Listed File #</b>	None
<b>UL Recognized File #</b>	None
<b>UL Hazardous File #</b>	None
<b>CE</b>	None
<b>CSA File #</b>	None
<b>RoHS Status</b>	Meets RoHS Chemical Restrictions - No CE (See RoHS Statement Below)
<b>EU REACH</b>	<a href="#">View EU REACH document</a>
<b>Other</b>	<a href="#">RoHS Statement</a>

## Dimensional Drawings



2D Drawing PDF Link:  
<https://cdn.automationdirect.com/static/drawings/SCE-FK2412SS6.pdf>  
See store item page for other formats.