

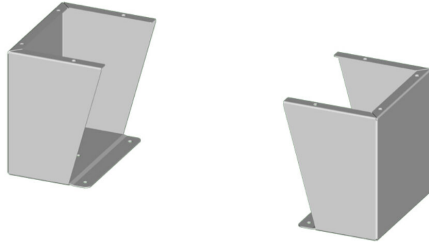
# SCE-FK1816LG Cut Sheet

Saginaw floor stand kit, 18in height, carbon steel, RAL 7035 light gray, powder coat finish. For use with 16in deep enclosures. Includes (2) floor stands and mounting hardware.

For complete product information, please see this item on our store at the following link:



<https://www.automationdirect.com/pn/SCE-FK1816LG>



---

## Technical Specifications

<b>Brand</b>	Saginaw
<b>Item</b>	Floor stand kit
<b>Height</b>	18in
<b>Width</b>	9.12in
<b>Depth</b>	16in
<b>Material</b>	Carbon steel
<b>Color</b>	RAL 7035 light gray
<b>Finish</b>	Powder coat
<b>For Use With</b>	16in deep enclosures
<b>Kit Includes</b>	(2) floor stands and mounting hardware

---

## Agency Approvals

<b>UL Listed File #</b>	None
<b>UL Recognized File #</b>	None
<b>UL Hazardous File #</b>	None
<b>CE</b>	None
<b>CSA File #</b>	None
<b>RoHS Status</b>	Meets RoHS Chemical Restrictions - No CE (See RoHS Statement Below)
<b>EU REACH</b>	<a href="#">View EU REACH document</a>
<b>Other</b>	<a href="#">RoHS Statement</a>

---

## Dimensional Drawings



2D Drawing PDF Link:  
<https://cdn.automationdirect.com/static/drawings/SCE-FK1816LG.pdf>  
See store item page for other formats.