

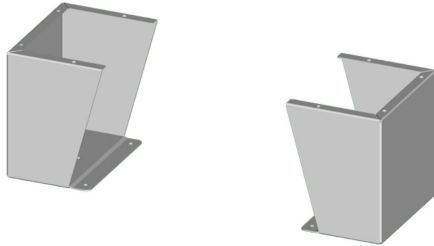
SCE-FK1518LG Cut Sheet

Saginaw floor stand kit, 15in height, carbon steel, RAL 7035 light gray, powder coat finish. For use with 18in deep enclosures. Includes (2) floor stands and mounting hardware.

For complete product information, please see this item on our store at the following link:



<https://www.automationdirect.com/pn/SCE-FK1518LG>



Technical Specifications

Brand	Saginaw
Item	Floor stand kit
Height	15in
Width	9.12in
Depth	18in
Material	Carbon steel
Color	RAL 7035 light gray
Finish	Powder coat
For Use With	18in deep enclosures
Kit Includes	(2) floor stands and mounting hardware

Agency Approvals

UL Listed File #	None
UL Recognized File #	None
UL Hazardous File #	None
CE	None
CSA File #	None
RoHS Status	Meets RoHS Chemical Restrictions - No CE (See RoHS Statement Below)
EU REACH	View EU REACH document
Other	RoHS Statement

Dimensional Drawings



2D Drawing PDF Link:
<https://cdn.automationdirect.com/static/drawings/SCE-FK1518LG.pdf>
See store item page for other formats.