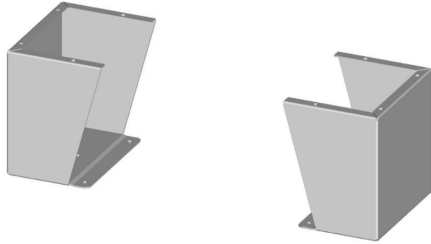


SCE-FK1218SS6 Cut Sheet

Saginaw floor stand kit, 12in height, 316L stainless steel, #4 brush finish. For use with 18in deep enclosures. Includes (2) floor stands and mounting hardware.

For complete product information, please see this item on our store at the following link:



<https://www.automationdirect.com/pn/SCE-FK1218SS6>

Technical Specifications

Brand	Saginaw
Item	Floor stand kit
Height	12in
Width	9.12in
Depth	18in
Material	316L stainless steel
Finish	#4 brush
For Use With	18in deep enclosures
Kit Includes	(2) floor stands and mounting hardware

Agency Approvals

UL Listed File #	None
UL Recognized File #	None
UL Hazardous File #	None
CE	None
CSA File #	None
RoHS Status	Meets RoHS Chemical Restrictions - No CE (See RoHS Statement Below)
EU REACH	View EU REACH document
Other	RoHS Statement

Dimensional Drawings



2D Drawing PDF Link:
<https://cdn.automationdirect.com/static/drawings/SCE-FK1218SS6.pdf>
See store item page for other formats.