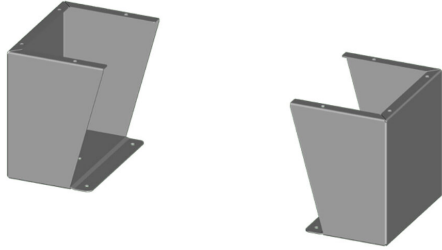


SCE-FK1216 Cut Sheet



Saginaw floor stand kit, 12in height, carbon steel, ANSI 61 gray, powder coat finish. For use with 16in deep enclosures. Includes (2) floor stands and mounting hardware.

For complete product information, please see this item on our store at the following link:



<https://www.automationdirect.com/pn/SCE-FK1216>

Technical Specifications

Brand	Saginaw
Item	Floor stand kit
Height	12in
Width	9.12in
Depth	16in
Material	Carbon steel
Color	ANSI 61 gray
Finish	Powder coat
For Use With	16in deep enclosures
Kit Includes	(2) floor stands and mounting hardware

Agency Approvals

UL Listed File #	None
UL Recognized File #	None
UL Hazardous File #	None
CE	None
CSA File #	None
RoHS Status	Meets RoHS Chemical Restrictions - No CE (See RoHS Statement Below)
EU REACH	View EU REACH document
Other	RoHS Statement

Dimensional Drawings



2D Drawing PDF Link:
<https://cdn.automationdirect.com/static/drawings/SCE-FK1216.pdf>
See store item page for other formats.