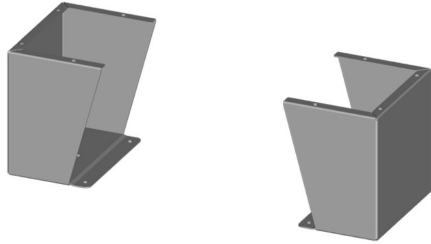


# SCE-FK1208 Cut Sheet



Saginaw floor stand kit, 12in height, carbon steel, ANSI 61 gray, powder coat finish. For use with 8in deep enclosures. Includes (2) floor stands and mounting hardware.

For complete product information, please see this item on our store at the following link:



<https://www.automationdirect.com/pn/SCE-FK1208>

## Technical Specifications

<b>Brand</b>	Saginaw
<b>Item</b>	Floor stand kit
<b>Height</b>	12in
<b>Width</b>	7.87in
<b>Depth</b>	8in
<b>Material</b>	Carbon steel
<b>Color</b>	ANSI 61 gray
<b>Finish</b>	Powder coat
<b>For Use With</b>	8in deep enclosures
<b>Kit Includes</b>	(2) floor stands and mounting hardware

## Agency Approvals

<b>UL Listed File #</b>	None
<b>UL Recognized File #</b>	None
<b>UL Hazardous File #</b>	None
<b>CE</b>	None
<b>CSA File #</b>	None
<b>RoHS Status</b>	Meets RoHS Chemical Restrictions - No CE (See RoHS Statement Below)
<b>EU REACH</b>	<a href="#">View EU REACH document</a>
<b>Other</b>	<a href="#">RoHS Statement</a>

## Dimensional Drawings



2D Drawing PDF Link:  
<https://cdn.automationdirect.com/static/drawings/SCE-FK1208.pdf>  
See store item page for other formats.