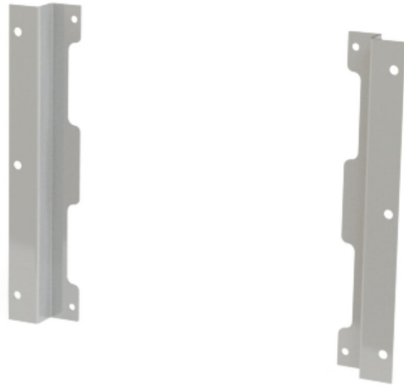


SCE-ELFM12H Cut Sheet



Saginaw vertical flush-mounting frame flange, carbon steel, ANSI 61 gray, powder coat finish. Package of 2. For use with 12in (H) Enviroline series wall-mount enclosures.

For complete product information, please see this item on our store at the following link:



<https://www.automationdirect.com/pn/SCE-ELFM12H>

Technical Specifications

Brand	Saginaw
Item	Vertical flush-mounting frame flange
Material	Carbon steel
Color	ANSI 61 gray
Finish	Powder coat
Quantity per Pack	2
For Use With	12in (H) Enviroline series wall-mount enclosures
Includes	Mounting hardware
Requires	Horizontal flush-mounting frame flanges to complete frame
Application	Converts wall-mount enclosure to a flush-mount enclosure

Agency Approvals

UL Listed File #	None
UL Recognized File #	None
UL Hazardous File #	None
CE	None
CSA File #	None
RoHS Status	Meets RoHS Chemical Restrictions - No CE (See RoHS Statement Below)
EU REACH	View EU REACH document
Other	RoHS Statement

Dimensional Drawings



2D Drawing PDF Link:
<https://cdn.automationdirect.com/static/drawings/SCE-ELFM12H.pdf>
See store item page for other formats.