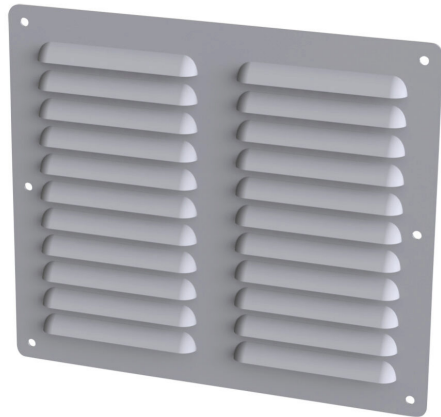


SCE-AVK86 Cut Sheet



Saginaw louver vent, 8.18 x 9.50in (HxW), carbon steel, ANSI 61 gray, powder coat finish, 6.94 x 8.00in (HxW) cutout, for ventilation of metal enclosure. Mounting hardware included.

For complete product information, please see this item on our store at the following link:



<https://www.automationdirect.com/pn/SCE-AVK86>

Technical Specifications

Brand	Saginaw
Item	Louver vent
Replacement	No
Size	8.18 x 9.50in (HxW)
Material	Carbon steel
Color	ANSI 61 gray
Finish	Powder coat
Cutout Size	6.94 x 8.00in (HxW)
Application	For ventilation of metal enclosure
Includes	Mounting hardware
Additional Information	Some assembly required

Agency Approvals

UL Listed File #	None
UL Recognized File #	None
UL Hazardous File #	None
CE	None
CSA File #	None
RoHS Status	Meets RoHS Chemical Restrictions - No CE (See RoHS Statement Below)
EU REACH	View EU REACH document
Other	RoHS Statement

Dimensional Drawings



2D Drawing PDF Link:
<https://cdn.automationdirect.com/static/drawings/SCE-AVK86.pdf>
See store item page for other formats.