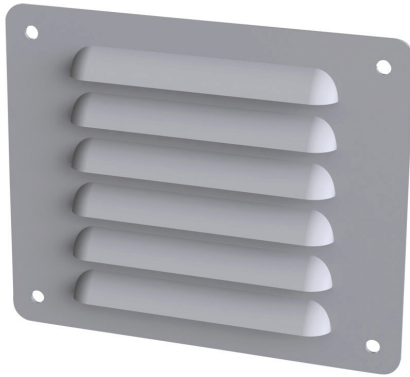


SCE-AVK43 Cut Sheet



Saginaw louver vent, 4.50 x 5.50in (HxW), carbon steel, ANSI 61 gray, powder coat finish, 3.25 x 4.00in (HxW) cutout, for ventilation of metal enclosure. Mounting hardware included.

For complete product information, please see this item on our store at the following link:



<https://www.automationdirect.com/pn/SCE-AVK43>

Technical Specifications

| | |
|-------------------------------|------------------------------------|
| Brand | Saginaw |
| Item | Louver vent |
| Replacement | No |
| Size | 4.50 x 5.50in (HxW) |
| Material | Carbon steel |
| Color | ANSI 61 gray |
| Finish | Powder coat |
| Cutout Size | 3.25 x 4.00in (HxW) |
| Application | For ventilation of metal enclosure |
| Includes | Mounting hardware |
| Additional Information | Some assembly required |

Agency Approvals

| | |
|-----------------------------|--|
| UL Listed File # | None |
| UL Recognized File # | None |
| UL Hazardous File # | None |
| CE | None |
| CSA File # | None |
| RoHS Status | Meets RoHS Chemical Restrictions - No CE (See RoHS Statement Below) |
| EU REACH | View EU REACH document |
| Other | RoHS Statement |