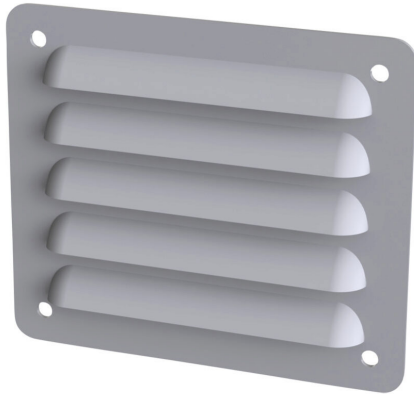


# SCE-AVK33 Cut Sheet



Saginaw louver vent, 3.88 x 4.50in (HxW), carbon steel, ANSI 61 gray, powder coat finish, 2.62 x 3.00in (HxW) cutout, for ventilation of metal enclosure. Mounting hardware included.

For complete product information, please see this item on our store at the following link:



<https://www.automationdirect.com/pn/SCE-AVK33>

## Technical Specifications

<b>Brand</b>	Saginaw
<b>Item</b>	Louver vent
<b>Replacement</b>	No
<b>Size</b>	3.88 x 4.50in (HxW)
<b>Material</b>	Carbon steel
<b>Color</b>	ANSI 61 gray
<b>Finish</b>	Powder coat
<b>Cutout Size</b>	2.62 x 3.00in (HxW)
<b>Application</b>	For ventilation of metal enclosure
<b>Includes</b>	Mounting hardware
<b>Additional Information</b>	Some assembly required

## Agency Approvals

<b>UL Listed File #</b>	None
<b>UL Recognized File #</b>	None
<b>UL Hazardous File #</b>	None
<b>CE</b>	None
<b>CSA File #</b>	None
<b>RoHS Status</b>	Meets RoHS Chemical Restrictions - No CE (See RoHS Statement Below)
<b>EU REACH</b>	<a href="#">View EU REACH document</a>
<b>Other</b>	<a href="#">RoHS Statement</a>