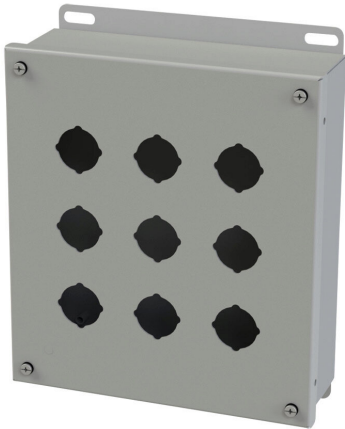


# SCE-9PB Cut Sheet



Saginaw pushbutton enclosure, 9 holes, 30mm, NEMA 4/12/13, 10 x 9 x 3in (HxWxD), wall mount, carbon steel, ANSI 61 gray, powder coat finish, screw cover.

For complete product information, please see this item on our store at the following link:



<https://www.automationdirect.com/pn/SCE-9PB>

## Technical Specifications

<b>Brand</b>	Saginaw
<b>Item</b>	Pushbutton enclosure
<b>Number of Pushbutton Holes</b>	9 holes
<b>Pushbutton Hole Nominal Size</b>	30mm
<b>NEMA Rating</b>	4/12/13
<b>IP Rating</b>	IP66
<b>Nominal Enclosure Dimensions</b>	10 x 9 x 3in (HxWxD)
<b>Enclosure Height</b>	9.81in
<b>Enclosure Width</b>	8.81in
<b>Enclosure Depth</b>	3.16in
<b>Mounting</b>	Wall
<b>Integral Mounting Feet</b>	No
<b>Integral Mounting Flange</b>	Yes
<b>Dual Access</b>	No
<b>Knockouts</b>	No
<b>Material</b>	Carbon steel
<b>Color</b>	ANSI 61 gray
<b>Finish</b>	Powder coat
<b>Cover Type</b>	Screw cover

## Agency Approvals

<b>UL Listed File #</b>	E69392
<b>UL Recognized File #</b>	None
<b>UL Hazardous File #</b>	None
<b>CE</b>	None
<b>CSA File #</b>	None
<b>RoHS Status</b>	Meets RoHS Chemical Restrictions - No CE (See RoHS Statement Below)
<b>EU REACH</b>	<a href="#">View EU REACH document</a>
<b>Other</b>	<a href="#">RoHS Statement</a>