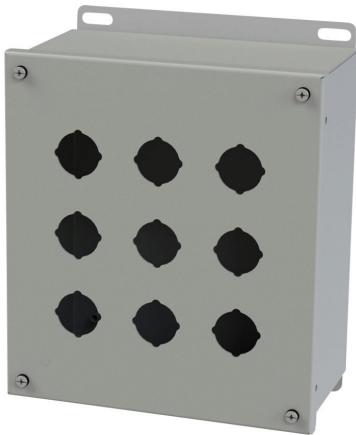


# SCE-9PBX Cut Sheet



Saginaw pushbutton enclosure, 9 holes, 30mm, NEMA 4/12/13, 10 x 9 x 5in (HxWxD), wall mount, carbon steel, ANSI 61 gray, powder coat finish, screw cover.

For complete product information, please see this item on our store at the following link:



<https://www.automationdirect.com/pn/SCE-9PBX>

## Technical Specifications

|                                     |                      |
|-------------------------------------|----------------------|
| <b>Brand</b>                        | Saginaw              |
| <b>Item</b>                         | Pushbutton enclosure |
| <b>Number of Pushbutton Holes</b>   | 9 holes              |
| <b>Pushbutton Hole Nominal Size</b> | 30mm                 |
| <b>NEMA Rating</b>                  | 4/12/13              |
| <b>IP Rating</b>                    | IP66                 |
| <b>Nominal Enclosure Dimensions</b> | 10 x 9 x 5in (HxWxD) |
| <b>Enclosure Height</b>             | 9.81in               |
| <b>Enclosure Width</b>              | 8.81in               |
| <b>Enclosure Depth</b>              | 4.91in               |
| <b>Mounting</b>                     | Wall                 |
| <b>Integral Mounting Feet</b>       | No                   |
| <b>Integral Mounting Flange</b>     | Yes                  |
| <b>Dual Access</b>                  | No                   |
| <b>Knockouts</b>                    | No                   |
| <b>Material</b>                     | Carbon steel         |
| <b>Color</b>                        | ANSI 61 gray         |
| <b>Finish</b>                       | Powder coat          |
| <b>Cover Type</b>                   | Screw cover          |
| <b>Additional Information</b>       | Extra deep           |

## Agency Approvals

|                             |   |
|-----------------------------|---|
| <b>UL Listed File #</b>     | E69392  |
| <b>UL Recognized File #</b> | None  |
| <b>UL Hazardous File #</b>  | None  |
| <b>CE</b>                   | None  |
| <b>CSA File #</b>           | None  |
| <b>RoHS Status</b>          | Meets RoHS Chemical Restrictions - No CE (See RoHS Statement Below) |
| <b>EU REACH</b>             | <a href="#">View EU REACH document</a>                              |
| <b>Other</b>                | <a href="#">RoHS Statement</a>                                      |