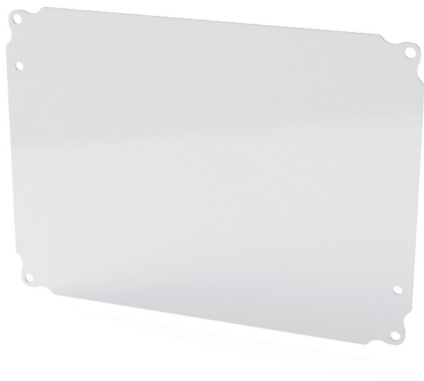


SCE-9P12L Cut Sheet



Saginaw subpanel, carbon steel, white, powder coat finish. For use with SCE-L912xELJxxx wire trough.

For complete product information, please see this item on our store at the following link:



<https://www.automationdirect.com/pn/SCE-9P12L>

Technical Specifications

Brand	Saginaw
Item	Subpanel
Height	8in
Width	11in
Thickness	14 gauge
Material	Carbon steel
Color	White
Finish	Powder coat
Perforations accept self-tapping screws for mounting lightweight components	No
For Use With	SCE-L912xELJxxx wire trough

Agency Approvals

UL Listed File #	None
UL Recognized File #	None
UL Hazardous File #	None
CE	None
CSA File #	None
RoHS Status	Meets RoHS Chemical Restrictions - No CE (See RoHS Statement Below)
EU REACH	View EU REACH document
Other	RoHS Statement

Dimensional Drawings



2D Drawing PDF Link:
<https://cdn.automationdirect.com/static/drawings/SCE-9P12L.pdf>
See store item page for other formats.