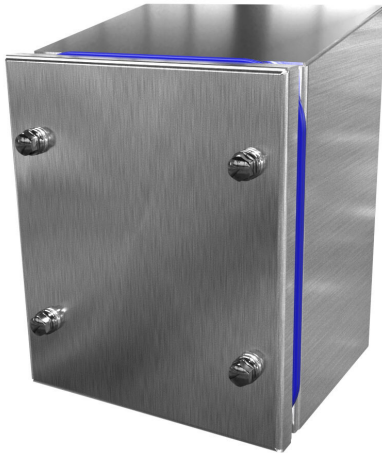


# SCE-7KJ0604SSST Cut Sheet



Saginaw sanitary enclosure, slope top, NEMA 3R/4/4X/12, 7 x 6 x 4in (HxWxD), wall mount, 304 stainless steel, #4 brush finish, screw cover.

For complete product information, please see this item on our store at the following link:



<https://www.automationdirect.com/pn/SCE-7KJ0604SSST>

## Technical Specifications

<b>Brand</b>	Saginaw
<b>Item</b>	Enclosure
<b>Subpanel</b>	Purchase subpanel separately
<b>Slope Top</b>	Yes
<b>3-Piece Assembly</b>	No
<b>Vented</b>	No
<b>NEMA Rating</b>	3R/4/4X/12
<b>IP Rating</b>	IP69K
<b>Nominal Enclosure Dimensions</b>	7 x 6 x 4in (HxWxD)
<b>Enclosure Height</b>	8.05in
<b>Enclosure Width</b>	6.00in
<b>Enclosure Depth</b>	5.10in

<b>Mounting</b>	Wall
<b>Integral Mounting Feet</b>	No
<b>Integral Mounting Flange</b>	No
<b>Dual Access</b>	No
<b>Knockouts</b>	No
<b>Bottom Gland Plate</b>	No
<b>Material</b>	304 stainless steel
<b>Finish</b>	#4 brush
<b>Cover Type</b>	Screw cover
<b>Shelf</b>	No
<b>Padlockable</b>	No
<b>Keylocking</b>	No

## Agency Approvals

<b>UL Listed File #</b>	E69392
<b>UL Recognized File #</b>	None
<b>UL Hazardous File #</b>	None
<b>CSA File #</b>	None
<b>RoHS Status</b>	Meets RoHS Chemical Restrictions - No CE (See RoHS Statement Below)
<b>EU REACH</b>	<a href="#">View EU REACH document</a>
<b>Other</b>	<a href="#">RoHS Statement</a>

## Dimensional Drawings



2D Drawing PDF Link:  
<https://cdn.automationdirect.com/static/drawings/SCE-7KJ0604SSST.pdf>  
See store item page for other formats.