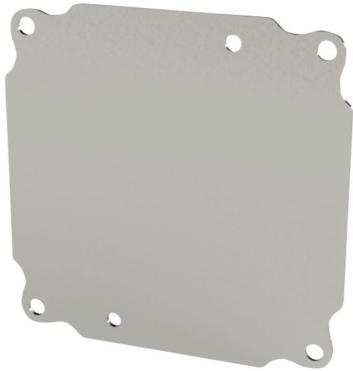


SCE-6P6SS Cut Sheet



Saginaw subpanel, 316L stainless steel, #4 brush finish. For use with SCE-606ELJxx, SCE-606CHNFxx, SCE-606SC and SCE-4SPBAx enclosures.

For complete product information, please see this item on our store at the following link:



<https://www.automationdirect.com/pn/SCE-6P6SS>

Technical Specifications

Brand	Saginaw
Item	Subpanel
Height	5in
Width	5in
Thickness	14 gauge
Material	316L stainless steel
Finish	#4 brush
Perforations accept self-tapping screws for mounting lightweight components	No
For Use With	SCE-606ELJxx, SCE-606CHNFxx, SCE-606SC and SCE-4SPBAx enclosures

Agency Approvals

UL Listed File #	None
UL Recognized File #	None
UL Hazardous File #	None
CE	None
CSA File #	None
RoHS Status	Meets RoHS Chemical Restrictions - No CE (See RoHS Statement Below)
EU REACH	View EU REACH document
Other	RoHS Statement