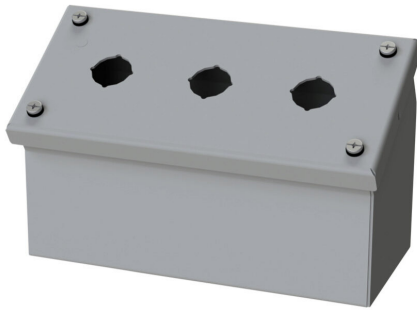


# SCE-3PBAI Cut Sheet



Saginaw pushbutton console, 3 holes, 22mm, NEMA 4/12/13, 4 x 8 x 5in (HxWxD), wall mount, carbon steel, ANSI 61 gray, powder coat finish, screw cover.

For complete product information, please see this item on our store at the following link:



<https://www.automationdirect.com/pn/SCE-3PBAI>

## Technical Specifications

<b>Brand</b>	Saginaw
<b>Item</b>	Pushbutton console
<b>Number of Pushbutton Holes</b>	3 holes
<b>Pushbutton Hole Nominal Size</b>	22mm
<b>NEMA Rating</b>	4/12/13
<b>IP Rating</b>	IP66
<b>Nominal Enclosure Dimensions</b>	4 x 8 x 5in (HxWxD)
<b>Enclosure Height</b>	4.08in
<b>Enclosure Width</b>	8.06in
<b>Enclosure Depth</b>	5.08in
<b>Mounting</b>	Wall
<b>Integral Mounting Feet</b>	No
<b>Integral Mounting Flange</b>	No
<b>Dual Access</b>	No
<b>Knockouts</b>	No
<b>Material</b>	Carbon steel
<b>Color</b>	ANSI 61 gray
<b>Finish</b>	Powder coat
<b>Cover Type</b>	Screw cover

## Agency Approvals

<b>UL Listed File #</b>	E69392
<b>UL Recognized File #</b>	None
<b>UL Hazardous File #</b>	None
<b>CE</b>	None
<b>CSA File #</b>	None
<b>RoHS Status</b>	Meets RoHS Chemical Restrictions - No CE (See RoHS Statement Below)
<b>EU REACH</b>	<a href="#">View EU REACH document</a>
<b>Other</b>	<a href="#">RoHS Statement</a>