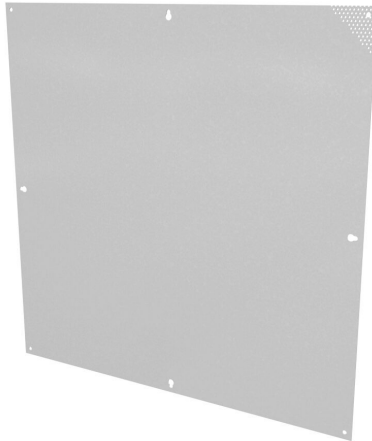


# SCE-30N30MPP Cut Sheet



Saginaw subpanel, perforated, carbon steel, white, powder coat finish. For use with SCE-30N3008LP enclosures.

For complete product information, please see this item on our store at the following link:



<https://www.automationdirect.com/pn/SCE-30N30MPP>

## Technical Specifications

<b>Brand</b>	Saginaw
<b>Item</b>	Subpanel
<b>Subpanel Type</b>	Perforated
<b>Height</b>	28in
<b>Width</b>	28in
<b>Thickness</b>	16 gauge
<b>Material</b>	Carbon steel

<b>Color</b>	White
<b>Finish</b>	Powder coat
<b>Perforations accept self-tapping screws for mounting lightweight components</b>	Yes
<b>For Use With</b>	SCE-30N3008LP enclosures

## Agency Approvals

<b>UL Listed File #</b>	None
<b>UL Recognized File #</b>	None
<b>UL Hazardous File #</b>	None
<b>CE</b>	None
<b>CSA File #</b>	None
<b>RoHS Status</b>	Meets RoHS Chemical Restrictions - No CE (See RoHS Statement Below)
<b>EU REACH</b>	<a href="#">View EU REACH document</a>
<b>Other</b>	<a href="#">RoHS Statement</a>

## Dimensional Drawings



2D Drawing PDF Link:  
<https://cdn.automationdirect.com/static/drawings/SCE-30N30MPP.pdf>  
See store item page for other formats.