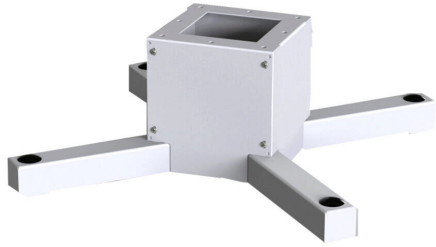


SCE-24PEBASE Cut Sheet



Saginaw pedestal base, carbon steel, 10.00 x 24.00 x 24.00in, RAL 7035 light gray, powder coat finish. For use with SCE-PE22 pedestal columns.

For complete product information, please see this item on our store at the following link:



<https://www.automationdirect.com/pn/SCE-24PEBASE>

Technical Specifications

Brand	Saginaw
Item	Pedestal base
Material	Carbon steel
Size	10.00 x 24.00 x 24.00in
Color	RAL 7035 light gray
Finish	Powder coat
NEMA Rating	12/13
For Use With	SCE-PE22 pedestal columns

Agency Approvals

UL Listed File #	None
UL Recognized File #	None
UL Hazardous File #	None
CE	None
CSA File #	None
RoHS Status	Meets RoHS Chemical Restrictions - No CE (See RoHS Statement Below)
EU REACH	View EU REACH document
Other	RoHS Statement

Dimensional Drawings



2D Drawing PDF Link:
<https://cdn.automationdirect.com/static/drawings/SCE-24PEBASE.pdf>
See store item page for other formats.