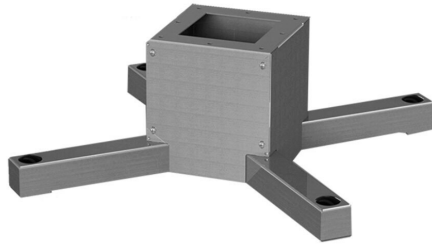


SCE-24PEBASESS Cut Sheet



Saginaw pedestal base, 304 stainless steel, 10.00 x 24.00 x 24.00in, #4 brush finish. For use with SCE-PE22SS pedestal columns.

For complete product information, please see this item on our store at the following link:



<https://www.automationdirect.com/pn/SCE-24PEBASESS>

Technical Specifications

Brand	Saginaw
Item	Pedestal base
Material	304 stainless steel
Size	10.00 x 24.00 x 24.00in
Finish	#4 brush
NEMA Rating	4/4X/12/13
For Use With	SCE-PE22SS pedestal columns

Agency Approvals

UL Listed File #	None
UL Recognized File #	None
UL Hazardous File #	None
CE	None
CSA File #	None
RoHS Status	Meets RoHS Chemical Restrictions - No CE (See RoHS Statement Below)
EU REACH	View EU REACH document
Other	RoHS Statement

Dimensional Drawings



2D Drawing PDF Link:
<https://cdn.automationdirect.com/static/drawings/SCE-24PEBASESS.pdf>
See store item page for other formats.