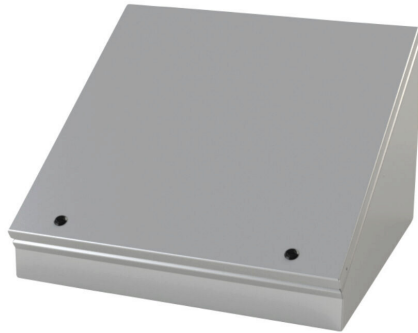


SCE-20C20ELJ Cut Sheet



Saginaw operator console, NEMA 3R/4/12/13, 20 x 20 x 13in (HxWxD), desktop or pedestal mount, carbon steel, ANSI 61 gray, powder coat finish, single-door, 1/4-turn semi-flush latch.

For complete product information, please see this item on our store at the following link:



<https://www.automationdirect.com/pn/SCE-20C20ELJ>

Technical Specifications

Brand	Saginaw	Dual Access	No
Item	Operator console	Knockouts	No
Subpanel	Purchase subpanel separately	Material	Carbon steel
Slope Top	No	Color	ANSI 61 gray
NEMA Rating	3R/4/12/13	Finish	Powder coat
IP Rating	IP66	Cover Type	Single-door
Nominal Enclosure Dimensions	20 x 20 x 13in (HxWxD)	Hinge Type	ELJ removable hinge
Enclosure Height	14.38in	Number of Lid Hinges	3
Enclosure Width	36.00in	Latch Type	1/4-turn semi-flush latch
Enclosure Depth	11.09in	Number Of Latches	3
Mounting	Desktop or pedestal	Padlockable	No
Integral Mounting Feet	No	Keylocking	No
Integral Mounting Flange	No	Additional Information	Purchase pedestal column separately

Agency Approvals

UL Listed File #	E69392
UL Recognized File #	None
UL Hazardous File #	None
CE	None
CSA File #	None
RoHS Status	Meets RoHS Chemical Restrictions - No CE (See RoHS Statement Below)
EU REACH	View EU REACH document
Other	RoHS Statement