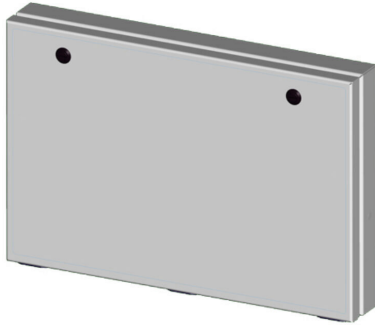


# SCE-19ELJEXPP Cut Sheet



Saginaw enclosure print pocket, 19 x 13 x 2.5in, screw mount.

For complete product information, please see this item on our store at the following link:



<https://www.automationdirect.com/pn/SCE-19ELJEXPP>

---

## Technical Specifications

<b>Brand</b>	Saginaw
<b>Item</b>	Enclosure print pocket
<b>Size</b>	19 x 13 x 2.5in
<b>Material</b>	Carbon steel
<b>Color</b>	RAL 7035 light gray
<b>Mounting</b>	Screw
<b>Includes</b>	Mounting screws and UL recognized sealing washers

---

## Agency Approvals

<b>UL Listed File #</b>	None
<b>UL Recognized File #</b>	None
<b>UL Hazardous File #</b>	None
<b>CE</b>	None
<b>CSA File #</b>	None
<b>RoHS Status</b>	Meets RoHS Chemical Restrictions - No CE (See RoHS Statement Below)
<b>EU REACH</b>	<a href="#">View EU REACH document</a>
<b>Other</b>	<a href="#">RoHS Statement</a>

---

## Dimensional Drawings



2D Drawing PDF Link:  
<https://cdn.automationdirect.com/static/drawings/SCE-19ELJEXPP.pdf>  
See store item page for other formats.