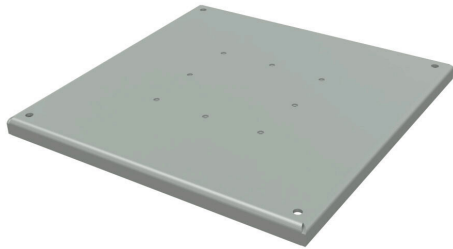


# SCE-18SBASE Cut Sheet



Saginaw pedestal base, carbon steel, 18.00 x 18.00in, ANSI 61 gray, powder coat finish. For use with console pedestal columns.

For complete product information, please see this item on our store at the following link:



<https://www.automationdirect.com/pn/SCE-18SBASE>

---

## Technical Specifications

<b>Brand</b>	Saginaw
<b>Item</b>	Pedestal base
<b>Material</b>	Carbon steel
<b>Size</b>	18.00 x 18.00in
<b>Color</b>	ANSI 61 gray
<b>Finish</b>	Powder coat
<b>NEMA Rating</b>	3R/4/12/13
<b>For Use With</b>	Console pedestal columns

---

## Agency Approvals

<b>UL Listed File #</b>	None
<b>UL Recognized File #</b>	None
<b>UL Hazardous File #</b>	None
<b>CE</b>	None
<b>CSA File #</b>	None
<b>RoHS Status</b>	Meets RoHS Chemical Restrictions - No CE (See RoHS Statement Below)
<b>EU REACH</b>	<a href="#">View EU REACH document</a>
<b>Other</b>	<a href="#">RoHS Statement</a>

---

## Dimensional Drawings



2D Drawing PDF Link:  
<https://cdn.automationdirect.com/static/drawings/SCE-18SBASE.pdf>  
See store item page for other formats.