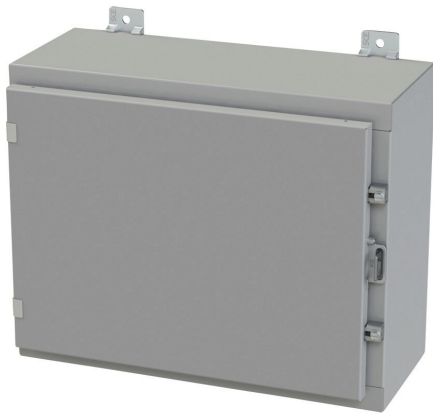


SCE-16H2008LP Cut Sheet



Saginaw enclosure, NEMA 3R/4/12/13, 16 x 20 x 8in (HxWxD), wall mount, carbon steel, ANSI 61 gray, powder coat finish, single-door, plated steel clamps, padlock hasp and staple.

For complete product information, please see this item on our store at the following link:



<https://www.automationdirect.com/pn/SCE-16H2008LP>

Technical Specifications

Brand	Saginaw	Dual Access	No
Item	Enclosure	Knockouts	No
Subpanel	Purchase subpanel separately	Bottom Gland Plate	No
Slope Top	No	Material	Carbon steel
3-Piece Assembly	No	Color	ANSI 61 gray
Vented	No	Finish	Powder coat
NEMA Rating	3R/4/12/13	Cover Type	Single-door
IP Rating	IP66	Hinge Type	Concealed hinges
Nominal Enclosure Dimensions	16 x 20 x 8in (HxWxD)	Number of Hinges Per Door	2
Enclosure Height	16.00in	Latch Type	Plated steel clamps
Enclosure Width	20.00in	Number Of Latches	2
Enclosure Depth	9.07in	Padlock Attachment Type	Padlock hasp and staple
Mounting	Wall	Shelf	No
Integral Mounting Feet	Yes	Padlockable	Yes
Integral Mounting Flange	No	Keylocking	No

Agency Approvals

UL Listed File #	E69392
UL Recognized File #	None
UL Hazardous File #	None
CE	None
CSA File #	None
RoHS Status	Meets RoHS Chemical Restrictions - No CE (See RoHS Statement Below)
EU REACH	View EU REACH document
Other	RoHS Statement

Dimensional Drawings



2D Drawing PDF Link:
<https://cdn.automationdirect.com/static/drawings/SCE-16H2008LP.pdf>
See store item page for other formats.