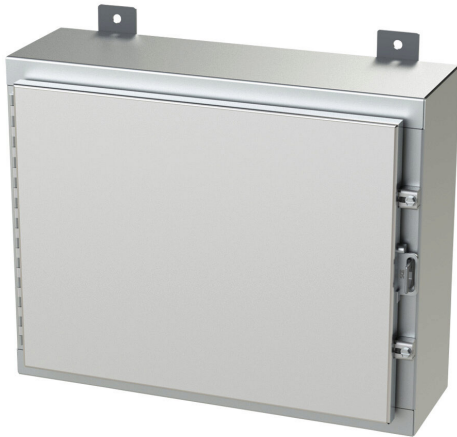


# SCE-16H2006SSLP Cut Sheet



Saginaw enclosure, NEMA 3R/4/4X/12/13, 16 x 20 x 6in (HxWxD), wall mount, 304 stainless steel, #4 brush finish, single-door, stainless steel clamps, padlock hasp and staple.

For complete product information, please see this item on our store at the following link:



<https://www.automationdirect.com/pn/SCE-16H2006SSLP>

## Technical Specifications

<b>Brand</b>	Saginaw
<b>Item</b>	Enclosure
<b>Subpanel</b>	Purchase subpanel separately
<b>Slope Top</b>	No
<b>3-Piece Assembly</b>	No
<b>Vented</b>	No
<b>NEMA Rating</b>	3R/4/4X/12/13
<b>IP Rating</b>	IP66
<b>Nominal Enclosure Dimensions</b>	16 x 20 x 6in (HxWxD)
<b>Enclosure Height</b>	16.00in
<b>Enclosure Width</b>	20.00in
<b>Enclosure Depth</b>	7.07in
<b>Mounting</b>	Wall
<b>Integral Mounting Feet</b>	Yes
<b>Integral Mounting Flange</b>	No

<b>Dual Access</b>	No
<b>Knockouts</b>	No
<b>Bottom Gland Plate</b>	No
<b>Material</b>	304 stainless steel
<b>Finish</b>	#4 brush
<b>Cover Type</b>	Single-door
<b>Hinge Type</b>	Continuous hinge
<b>Number of Hinges Per Door</b>	1
<b>Latch Type</b>	Stainless steel clamps
<b>Number Of Latches</b>	2
<b>Padlock Attachment Type</b>	Padlock hasp and staple
<b>Shelf</b>	No
<b>Padlockable</b>	Yes
<b>Keylocking</b>	No

## Agency Approvals

<b>UL Listed File #</b>	E69392
<b>UL Recognized File #</b>	None
<b>UL Hazardous File #</b>	None
<b>CE</b>	None
<b>CSA File #</b>	None
<b>RoHS Status</b>	Meets RoHS Chemical Restrictions - No CE (See RoHS Statement Below)
<b>EU REACH</b>	<a href="#">View EU REACH document</a>
<b>Other</b>	<a href="#">RoHS Statement</a>

## Dimensional Drawings



2D Drawing PDF Link:  
<https://cdn.automationdirect.com/static/drawings/SCE-16H2006SSLP.pdf>  
See store item page for other formats.