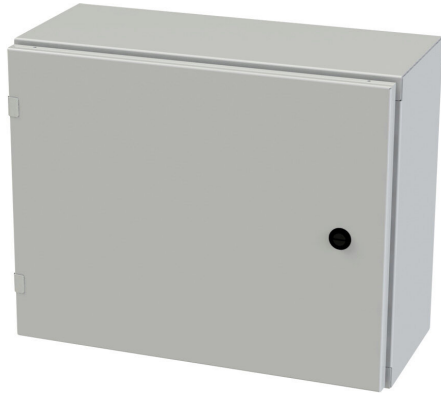


# SCE-16EL2008LPLG Cut Sheet



Saginaw Enviroline series enclosure, NEMA 3R/4/12/13, 16 x 20 x 8in (HxWxD), wall mount, carbon steel, RAL 7035 light gray, powder coat finish, single-door, 1/4-turn semi-flush latch.

For complete product information, please see this item on our store at the following link:



<https://www.automationdirect.com/pn/SCE-16EL2008LPLG>

## Technical Specifications

<b>Brand</b>	Saginaw
<b>Item</b>	Enclosure
<b>Series</b>	Enviroline
<b>Subpanel</b>	Purchase subpanel separately
<b>Slope Top</b>	No
<b>3-Piece Assembly</b>	No
<b>Vented</b>	No
<b>NEMA Rating</b>	3R/4/12/13
<b>IP Rating</b>	IP66
<b>Nominal Enclosure Dimensions</b>	16 x 20 x 8in (HxWxD)
<b>Enclosure Height</b>	16.00in
<b>Enclosure Width</b>	20.00in
<b>Enclosure Depth</b>	9.10in
<b>Mounting</b>	Wall
<b>Integral Mounting Feet</b>	No

<b>Integral Mounting Flange</b>	No
<b>Dual Access</b>	No
<b>Knockouts</b>	No
<b>Bottom Gland Plate</b>	No
<b>Material</b>	Carbon steel
<b>Color</b>	RAL 7035 light gray
<b>Finish</b>	Powder coat
<b>Cover Type</b>	Single-door
<b>Hinge Type</b>	Concealed hinges
<b>Number of Hinges Per Door</b>	2
<b>Latch Type</b>	1/4-turn semi-flush latch
<b>Number Of Latches</b>	1
<b>Padlockable</b>	No
<b>Keylocking</b>	No

## Agency Approvals

<b>UL Listed File #</b>	E69392
<b>UL Recognized File #</b>	None
<b>UL Hazardous File #</b>	None
<b>CE</b>	None
<b>CSA File #</b>	None
<b>RoHS Status</b>	Meets RoHS Chemical Restrictions - No CE (See RoHS Statement Below)
<b>EU REACH</b>	<a href="#">View EU REACH document</a>
<b>Other</b>	<a href="#">RoHS Statement</a>