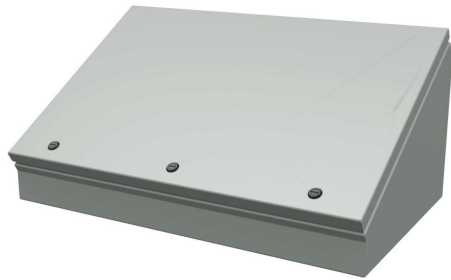


# SCE-16C24ELJ Cut Sheet



Saginaw operator console, NEMA 3R/4/12/13, 16 x 24 x 11in (HxWxD), desktop or pedestal mount, carbon steel, ANSI 61 gray, powder coat finish, single-door, 1/4-turn semi-flush latch.

For complete product information, please see this item on our store at the following link:



<https://www.automationdirect.com/pn/SCE-16C24ELJ>

## Technical Specifications

<b>Brand</b>	Saginaw
<b>Item</b>	Operator console
<b>Subpanel</b>	Purchase subpanel separately
<b>Slope Top</b>	No
<b>3-Piece Assembly</b>	No
<b>Vented</b>	No
<b>NEMA Rating</b>	3R/4/12/13
<b>IP Rating</b>	IP66
<b>Nominal Enclosure Dimensions</b>	16 x 24 x 11in (HxWxD)
<b>Enclosure Height</b>	14.38in
<b>Enclosure Width</b>	24.00in
<b>Enclosure Depth</b>	11.09in
<b>Mounting</b>	Desktop or pedestal
<b>Integral Mounting Feet</b>	No
<b>Integral Mounting Flange</b>	No

<b>Dual Access</b>	No
<b>Knockouts</b>	No
<b>Bottom Gland Plate</b>	No
<b>Material</b>	Carbon steel
<b>Color</b>	ANSI 61 gray
<b>Finish</b>	Powder coat
<b>Cover Type</b>	Single-door
<b>Hinge Type</b>	ELJ removable hinge
<b>Number of Lid Hinges</b>	4
<b>Latch Type</b>	1/4-turn semi-flush latch
<b>Number Of Latches</b>	3
<b>Shelf</b>	No
<b>Padlockable</b>	No
<b>Keylocking</b>	No
<b>Additional Information</b>	Purchase pedestal column separately

## Agency Approvals

<b>UL Listed File #</b>	E69392
<b>UL Recognized File #</b>	None
<b>UL Hazardous File #</b>	None
<b>CE</b>	None
<b>CSA File #</b>	None
<b>RoHS Status</b>	Meets RoHS Chemical Restrictions - No CE (See RoHS Statement Below)
<b>EU REACH</b>	<a href="#">View EU REACH document</a>
<b>Other</b>	<a href="#">RoHS Statement</a>

## Dimensional Drawings



2D Drawing PDF Link:  
<https://cdn.automationdirect.com/static/drawings/SCE-16C24ELJ.pdf>  
See store item page for other formats.