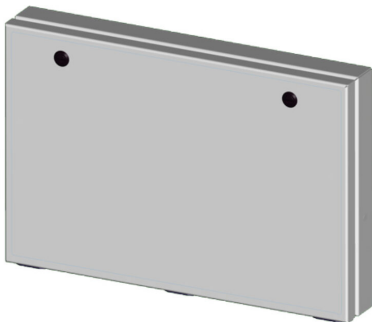


# SCE-13ELJEXPP Cut Sheet



Saginaw enclosure print pocket, 13 x 19 x 2.5in, screw mount.

For complete product information, please see this item on our store at the following link:



<https://www.automationdirect.com/pn/SCE-13ELJEXPP>

## Technical Specifications

Brand	Saginaw
Item	Enclosure print pocket
Size	13 x 19 x 2.5in
Material	Carbon steel
Color	RAL 7035 light gray
Mounting	Screw
Includes	Mounting screws and UL recognized sealing washers

## Agency Approvals

UL Listed File #	None
UL Recognized File #	None
UL Hazardous File #	None
CE	None
CSA File #	None
RoHS Status	Meets RoHS Chemical Restrictions - No CE (See RoHS Statement Below)
EU REACH	<a href="#">View EU REACH document</a>
Other	<a href="#">RoHS Statement</a>

## Dimensional Drawings



2D Drawing PDF Link:  
<https://cdn.automationdirect.com/static/drawings/SCE-13ELJEXPP.pdf>  
See store item page for other formats.