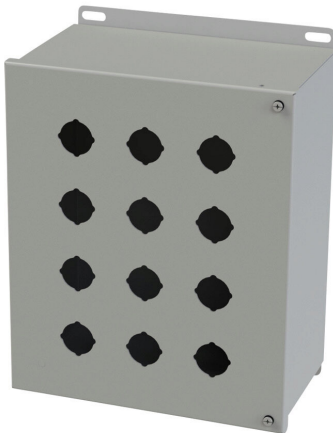


SCE-12PBH Cut Sheet



Saginaw pushbutton enclosure, 12 holes, 30mm, NEMA 4/12/13, 12 x 10 x 6in (HxWxD), wall mount, carbon steel, ANSI 61 gray, powder coat finish, hinged screw cover.

For complete product information, please see this item on our store at the following link:



<https://www.automationdirect.com/pn/SCE-12PBH>

Technical Specifications

Brand	Saginaw
Item	Pushbutton enclosure
Number of Pushbutton Holes	12 holes
Pushbutton Hole Nominal Size	30mm
Slope Top	No
NEMA Rating	4/12/13
IP Rating	IP66
Nominal Enclosure Dimensions	12 x 10 x 6in (HxWxD)
Enclosure Height	12.38in
Enclosure Width	10.31in
Enclosure Depth	6.20in
Mounting	Wall

Integral Mounting Feet	No
Integral Mounting Flange	Yes
Dual Access	No
Knockouts	No
Material	Carbon steel
Color	ANSI 61 gray
Finish	Powder coat
Cover Type	Hinged screw cover
Hinge Type	Continuous hinge
Number of Hinges Per Door	1
Padlockable	No
Keylocking	No

Agency Approvals

UL Listed File #	E69392
UL Recognized File #	None
UL Hazardous File #	None
CE	None
CSA File #	None
RoHS Status	Meets RoHS Chemical Restrictions - No CE (See RoHS Statement Below)
EU REACH	View EU REACH document
Other	RoHS Statement

Dimensional Drawings



2D Drawing PDF Link:
<https://cdn.automationdirect.com/static/drawings/SCE-12PBH.pdf>
See store item page for other formats.