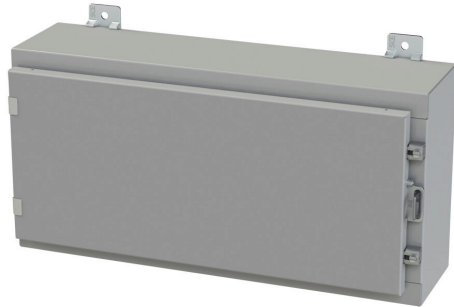


SCE-12H2406LP Cut Sheet



Saginaw enclosure, NEMA 3R/4/12/13, 12 x 24 x 6in (HxWxD), wall mount, carbon steel, ANSI 61 gray, powder coat finish, single-door, plated steel clamps, padlock hasp and staple.

For complete product information, please see this item on our store at the following link:



<https://www.automationdirect.com/pn/SCE-12H2406LP>

Technical Specifications

Brand	Saginaw
Item	Enclosure
Subpanel	Purchase subpanel separately
Slope Top	No
3-Piece Assembly	No
Vented	No
NEMA Rating	3R/4/12/13
IP Rating	IP66
Nominal Enclosure Dimensions	12 x 24 x 6in (HxWxD)
Enclosure Height	12.00in
Enclosure Width	24.00in
Enclosure Depth	7.07in
Mounting	Wall
Integral Mounting Feet	Yes
Integral Mounting Flange	No

Dual Access	No
Knockouts	No
Bottom Gland Plate	No
Material	Carbon steel
Color	ANSI 61 gray
Finish	Powder coat
Cover Type	Single-door
Hinge Type	Concealed hinges
Number of Hinges Per Door	2
Latch Type	Plated steel clamps
Number Of Latches	2
Padlock Attachment Type	Padlock hasp and staple
Padlockable	Yes
Keylocking	No

Agency Approvals

UL Listed File #	E69392
UL Recognized File #	None
UL Hazardous File #	None
CE	None
CSA File #	None
RoHS Status	Meets RoHS Chemical Restrictions - No CE (See RoHS Statement Below)
EU REACH	View EU REACH document
Other	RoHS Statement