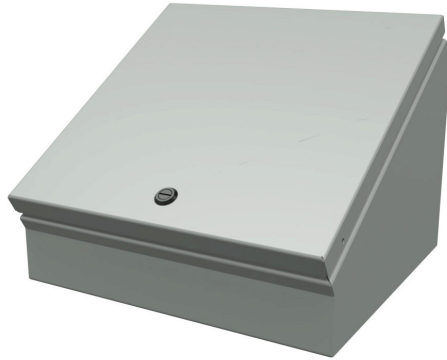


SCE-12C12ELJ Cut Sheet



Saginaw operator console, NEMA 3R/4/12/13, 12 x 12 x 9in (HxWxD), desktop or pedestal mount, carbon steel, ANSI 61 gray, powder coat finish, single-door, 1/4-turn semi-flush latch.

For complete product information, please see this item on our store at the following link:



<https://www.automationdirect.com/pn/SCE-12C12ELJ>

Technical Specifications

Brand	Saginaw
Item	Operator console
Subpanel	Purchase subpanel separately
Slope Top	No
3-Piece Assembly	No
Vented	No
NEMA Rating	3R/4/12/13
IP Rating	IP66
Nominal Enclosure Dimensions	12 x 12 x 9in (HxWxD)
Enclosure Height	10.91in
Enclosure Width	12.00in
Enclosure Depth	9.09in
Mounting	Desktop or pedestal
Integral Mounting Feet	No
Integral Mounting Flange	No

Dual Access	No
Knockouts	No
Bottom Gland Plate	No
Material	Carbon steel
Color	ANSI 61 gray
Finish	Powder coat
Cover Type	Single-door
Hinge Type	ELJ removable hinge
Number of Lid Hinges	2
Latch Type	1/4-turn semi-flush latch
Number Of Latches	1
Shelf	No
Padlockable	No
Keylocking	No
Additional Information	Purchase pedestal column separately

Agency Approvals

UL Listed File #	E69392
UL Recognized File #	None
UL Hazardous File #	None
CE	None
CSA File #	None
RoHS Status	Meets RoHS Chemical Restrictions - No CE (See RoHS Statement Below)
EU REACH	View EU REACH document
Other	RoHS Statement

Dimensional Drawings



2D Drawing PDF Link:
<https://cdn.automationdirect.com/static/drawings/SCE-12C12ELJ.pdf>
See store item page for other formats.