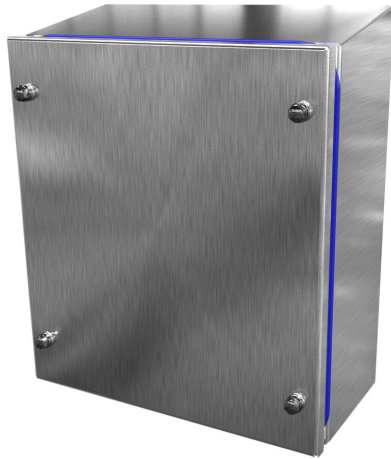


SCE-11KJ1004SSST Cut Sheet



Saginaw sanitary enclosure, slope top, NEMA 3R/4/4X/12, 11 x 10 x 4in (HxWxD), wall mount, 304 stainless steel, #4 brush finish, screw cover.

For complete product information, please see this item on our store at the following link:



<https://www.automationdirect.com/pn/SCE-11KJ1004SSST>

Technical Specifications

Brand	Saginaw
Item	Enclosure
Subpanel	Purchase subpanel separately
Slope Top	Yes
3-Piece Assembly	No
Vented	No
NEMA Rating	3R/4/4X/12
IP Rating	IP69K
Nominal Enclosure Dimensions	11 x 10 x 4in (HxWxD)
Enclosure Height	12.05in
Enclosure Width	10.00in
Enclosure Depth	5.10in

Mounting	Wall
Integral Mounting Feet	No
Integral Mounting Flange	No
Dual Access	No
Knockouts	No
Bottom Gland Plate	No
Material	304 stainless steel
Finish	#4 brush
Cover Type	Screw cover
Shelf	No
Padlockable	No
Keylocking	No

Agency Approvals

UL Listed File #	E69392
UL Recognized File #	None
UL Hazardous File #	None
CSA File #	None
RoHS Status	Meets RoHS Chemical Restrictions - No CE (See RoHS Statement Below)
EU REACH	View EU REACH document
Other	RoHS Statement

Dimensional Drawings



2D Drawing PDF Link:
<https://cdn.automationdirect.com/static/drawings/SCE-11KJ1004SSST.pdf>
See store item page for other formats.