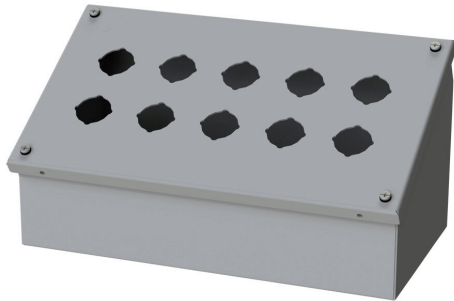


SCE-10PBA Cut Sheet



Saginaw pushbutton console, 10 holes, 30mm, NEMA 4/12/13, 7 x 13 x 7in (HxWxD), wall mount, carbon steel, ANSI 61 gray, powder coat finish, screw cover, purchase subpanel separately.

For complete product information, please see this item on our store at the following link:



<https://www.automationdirect.com/pn/SCE-10PBA>

Technical Specifications

Brand	Saginaw
Item	Pushbutton console
Number of Pushbutton Holes	10 holes
Pushbutton Hole Nominal Size	30mm
Slope Top	No
NEMA Rating	4/12/13
IP Rating	IP66
Nominal Enclosure Dimensions	7 x 13 x 7in (HxWxD)
Enclosure Height	7.32in
Enclosure Width	13.31in
Enclosure Depth	6.95in

Mounting	Wall
Integral Mounting Feet	No
Integral Mounting Flange	No
Dual Access	No
Knockouts	No
Material	Carbon steel
Color	ANSI 61 gray
Finish	Powder coat
Cover Type	Screw cover
Padlockable	No
Keylocking	No
Subpanel	Purchase subpanel separately

Agency Approvals

UL Listed File #	E69392
UL Recognized File #	None
UL Hazardous File #	None
CE	None
CSA File #	None
RoHS Status	Meets RoHS Chemical Restrictions - No CE (See RoHS Statement Below)
EU REACH	View EU REACH document
Other	RoHS Statement

Dimensional Drawings



2D Drawing PDF Link:
<https://cdn.automationdirect.com/static/drawings/SCE-10PBA.pdf>
See store item page for other formats.