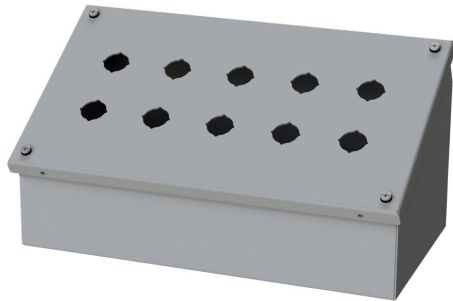


# SCE-10PBAI Cut Sheet



Saginaw pushbutton console, 10 holes, 22mm, NEMA 4/12/13, 7 x 13 x 7in (HxWxD), wall mount, carbon steel, ANSI 61 gray, powder coat finish, screw cover, purchase subpanel separately.

For complete product information, please see this item on our store at the following link:



<https://www.automationdirect.com/pn/SCE-10PBAI>

## Technical Specifications

|                                     |                      |
|-------------------------------------|----------------------|
| <b>Brand</b>                        | Saginaw              |
| <b>Item</b>                         | Pushbutton console   |
| <b>Number of Pushbutton Holes</b>   | 10 holes             |
| <b>Pushbutton Hole Nominal Size</b> | 22mm                 |
| <b>Slope Top</b>                    | No                   |
| <b>NEMA Rating</b>                  | 4/12/13              |
| <b>IP Rating</b>                    | IP66                 |
| <b>Nominal Enclosure Dimensions</b> | 7 x 13 x 7in (HxWxD) |
| <b>Enclosure Height</b>             | 7.32in               |
| <b>Enclosure Width</b>              | 13.31in              |
| <b>Enclosure Depth</b>              | 6.95in               |

|                                 |                              |
|---------------------------------|------------------------------|
| <b>Mounting</b>                 | Wall                         |
| <b>Integral Mounting Feet</b>   | No                           |
| <b>Integral Mounting Flange</b> | No                           |
| <b>Dual Access</b>              | No                           |
| <b>Knockouts</b>                | No                           |
| <b>Material</b>                 | Carbon steel                 |
| <b>Color</b>                    | ANSI 61 gray                 |
| <b>Finish</b>                   | Powder coat                  |
| <b>Cover Type</b>               | Screw cover                  |
| <b>Padlockable</b>              | No                           |
| <b>Keylocking</b>               | No                           |
| <b>Subpanel</b>                 | Purchase subpanel separately |

## Agency Approvals

|                             |   |
|-----------------------------|---|
| <b>UL Listed File #</b>     | E69392  |
| <b>UL Recognized File #</b> | None  |
| <b>UL Hazardous File #</b>  | None  |
| <b>CE</b>                   | None  |
| <b>CSA File #</b>           | None  |
| <b>RoHS Status</b>          | Meets RoHS Chemical Restrictions - No CE (See RoHS Statement Below) |
| <b>EU REACH</b>             | <a href="#">View EU REACH document</a>                              |
| <b>Other</b>                | <a href="#">RoHS Statement</a>                                      |

## Dimensional Drawings



2D Drawing PDF Link:  
<https://cdn.automationdirect.com/static/drawings/SCE-10PBAI.pdf>  
See store item page for other formats.