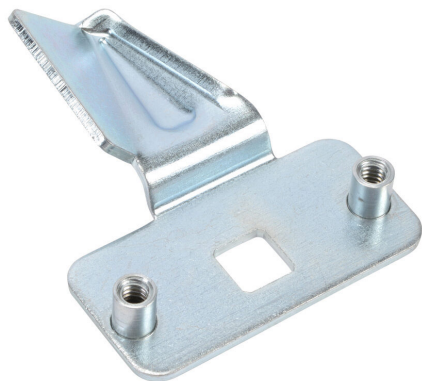


SCE-102237 Cut Sheet



Saginaw latch cam, replacement, carbon steel, plated zinc finish.
For use with Saginaw 7in door handles.

For complete product information, please see this item on our
store at the following link:



<https://www.automationdirect.com/pn/SCE-102237>

Technical Specifications

Brand	Saginaw
Item	Latch cam
Replacement	Yes
Material	Carbon steel
Finish	Plated zinc
Quantity per Pack	1
For Use With	Saginaw 7in door handles
Additional Information	Field assembly required

Agency Approvals

UL Listed File #	None
UL Recognized File #	None
UL Hazardous File #	None
CE	None
CSA File #	None
RoHS Status	Meets RoHS Chemical Restrictions - No CE (See RoHS Statement Below)
EU REACH	View EU REACH document
Other	RoHS Statement

Dimensional Drawings



2D Drawing PDF Link:
<https://cdn.automationdirect.com/static/drawings/SCE-102237.pdf>
See store item page for other formats.