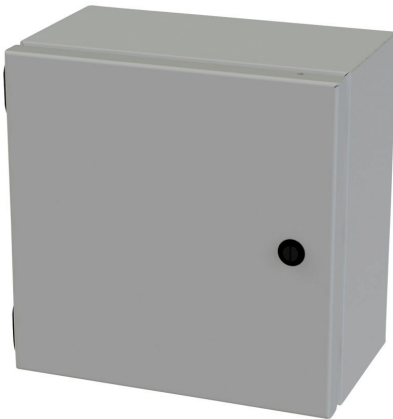


SCE-10106ELJ Cut Sheet



Saginaw Enviroline Junction series enclosure, NEMA 3R/4/12/13, 10 x 10 x 6in (HxWxD), wall mount, carbon steel, ANSI 61 gray, powder coat finish, single-door, 1/4-turn semi-flush latch.

For complete product information, please see this item on our store at the following link:



<https://www.automationdirect.com/pn/SCE-10106ELJ>

Technical Specifications

Brand	Saginaw	Integral Mounting Flange	No
Item	Enclosure	Dual Access	No
Series	Enviroline Junction	Knockouts	No
Subpanel	Purchase subpanel separately	Bottom Gland Plate	No
Slope Top	No	Material	Carbon steel
3-Piece Assembly	No	Color	ANSI 61 gray
Vented	No	Finish	Powder coat
NEMA Rating	3R/4/12/13	Cover Type	Single-door
IP Rating	IP66	Hinge Type	ELJ removable hinge
Nominal Enclosure Dimensions	10 x 10 x 6in (HxWxD)	Number of Hinges Per Door	2
Enclosure Height	10.00in	Latch Type	1/4-turn semi-flush latch
Enclosure Width	10.00in	Number Of Latches	1
Enclosure Depth	6.18in	Shelf	No
Mounting	Wall	Padlockable	No
Integral Mounting Feet	No	Keylocking	No

Agency Approvals

UL Listed File #	E69392
UL Recognized File #	None
UL Hazardous File #	None
CE	None
CSA File #	None
RoHS Status	Meets RoHS Chemical Restrictions - No CE (See RoHS Statement Below)
EU REACH	View EU REACH document
Other	RoHS Statement

Dimensional Drawings



2D Drawing PDF Link:
<https://cdn.automationdirect.com/static/drawings/SCE-10106ELJ.pdf>
See store item page for other formats.