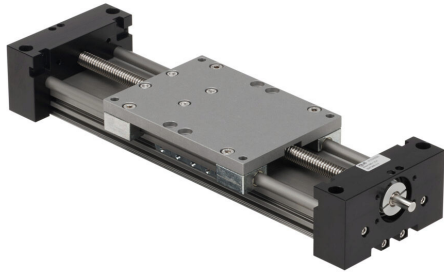


SAW1080-1.5-A Cut Sheet



igus drylin series linear actuator assembly, W1080 twin rail, 108mm wide, 150mm travel, lead screw, 25mm pitch, hard-anodized aluminum rail.

For complete product information, please see this item on our store at the following link:



<https://www.automationdirect.com/pn/SAW1080-1.5-A>

Technical Specifications

Brand	igus
Item	Linear actuator assembly
Series	Drylin
Actuator Type	W1080 twin rail
Width	108mm
Carriage Height	49.25mm
Travel Length	150mm
Driver Type	Lead screw
Pitch	25mm
Rail Material	Hard-anodized aluminum

Agency Approvals

UL Listed File #	None
UL Recognized File #	None
UL Hazardous File #	None
CE	None
CSA File #	None
RoHS Status	Meets RoHS Chemical Restrictions - No CE (See RoHS Statement Below)
EU REACH	View EU REACH document
Other	RoHS Statement

Dimensional Drawings



2D Drawing PDF Link:
<https://cdn.automationdirect.com/static/drawings/2d/SAW1080-1.5-A.pdf>
See store item page for other formats.