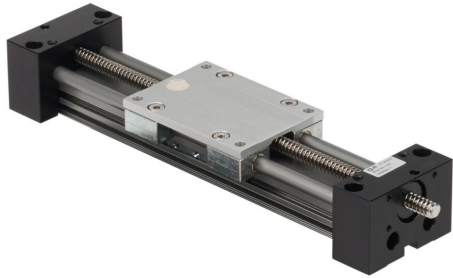


# SAW1040-1.5-B Cut Sheet



igus drylin series linear actuator assembly, W1040 twin rail, 74mm wide, 150mm travel, lead screw, 25mm pitch, hard-anodized aluminum rail.

For complete product information, please see this item on our store at the following link:



<https://www.automationdirect.com/pn/SAW1040-1.5-B>

## Technical Specifications

<b>Brand</b>	igus
<b>Item</b>	Linear actuator assembly
<b>Series</b>	Drylin
<b>Actuator Type</b>	W1040 twin rail
<b>Width</b>	74mm
<b>Carriage Height</b>	45.25mm
<b>Travel Length</b>	150mm
<b>Driver Type</b>	Lead screw
<b>Pitch</b>	25mm
<b>Rail Material</b>	Hard-anodized aluminum

## Agency Approvals

<b>UL Listed File #</b>	None
<b>UL Recognized File #</b>	None
<b>UL Hazardous File #</b>	None
<b>CE</b>	None
<b>CSA File #</b>	None
<b>RoHS Status</b>	Meets RoHS Chemical Restrictions - No CE (See RoHS Statement Below)
<b>EU REACH</b>	<a href="#">View EU REACH document</a>
<b>Other</b>	<a href="#">RoHS Statement</a>

## Dimensional Drawings



2D Drawing PDF Link:  
<https://cdn.automationdirect.com/static/drawings/2d/SAW1040-1.5-B.pdf>  
See store item page for other formats.