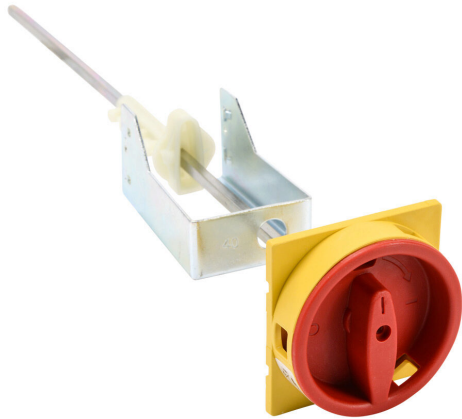


RMMP-330E Cut Sheet



WEG Electric rotary handle, selector, red/yellow, external front mount, 2-position, lockable in OFF only, NEMA 1/3R, IP55. For use with MPW40 series manual motor protectors. 330mm shaft included.

For complete product information, please see this item on our store at the following link:



<https://www.automationdirect.com/pn/RMMP-330E>

Technical Specifications

Brand	WEG Electric
Item	Handle
Handle Type	Rotary
Handle Style	Selector
Color	Red/yellow
Mounting	External front
Number Of Positions	2
Lockable Positions	OFF only
Defeatable	No
NEMA Rating	1/3R
IP Rating	IP55
Test Function	No
For Use With	MPW40 series manual motor protectors
Includes	330mm shaft

Agency Approvals

UL Listed File #	E172121
UL Recognized File #	None
UL Hazardous File #	None
CE	View CE declarations
CSA File #	None
RoHS Status	Yes (See CE Doc)
EU REACH	View EU REACH document

Dimensional Drawings



2D Drawing PDF Link:
<https://cdn.automationdirect.com/static/drawings/RMMP-330E.pdf>
See store item page for other formats.