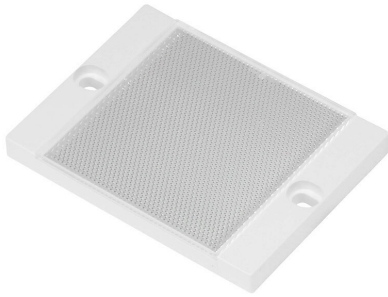


RL201-1 Cut Sheet



Micro Detectors reflector, rectangular, 60mm x 82mm. For use with polarized reflective laser photoelectric sensors.

For complete product information, please see this item on our store at the following link:



<https://www.automationdirect.com/pn/RL201-1>

Technical Specifications

Brand	Micro Detectors
Item	Reflector
Shape	Rectangular
Size	60mm x 82mm
For Use With	Polarized reflective laser photoelectric sensors

Agency Approvals

UL Listed File #	None
UL Recognized File #	None
UL Hazardous File #	None
CE	None
CSA File #	None
RoHS Status	No
EU REACH	View EU REACH document

Dimensional Drawings



2D Drawing PDF Link:
<https://cdn.automationdirect.com/static/drawings/RL201-1.pdf>
See store item page for other formats.