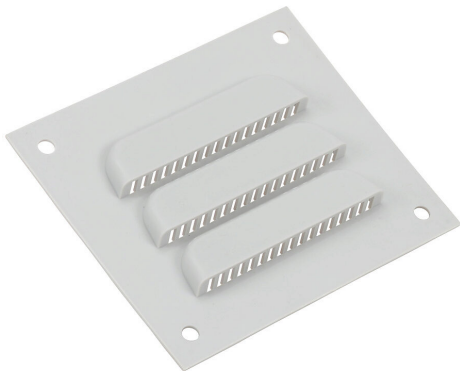


# REL P1 Cut Sheet



Stahlin louver vent, 3.81 x 4.44in (HxW), polypropylene, light gray, 3 x 3in (HxW) cutout.

For complete product information, please see this item on our store at the following link:



<https://www.automationdirect.com/pn/REL P1>

## Technical Specifications

Brand	Stahlin
Item	Louver vent
Replacement	No
Size	3.81 x 4.44in (HxW)
Material	Polypropylene
Color	Light gray
Cutout Size	3 x 3in (HxW)

## Agency Approvals

UL Listed File #	none
UL Recognized File #	none
UL Hazardous File #	none
CE	None
CSA File #	none
RoHS Status	No
EU REACH	<a href="#">View EU REACH document</a>