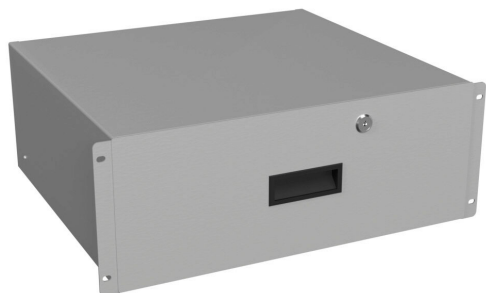


RDRW1900716LG1 Cut Sheet



Hammond locking rack drawer, 4U, 19in rack width, 16.25in depth, carbon steel, RAL 7035 light gray, textured powder coat finish.

For complete product information, please see this item on our store at the following link:



<https://www.automationdirect.com/pn/RDRW1900716LG1>

Technical Specifications

Brand	Hammond
Item	Locking rack drawer
Rack Height	4U
Rack Width	19in
Depth	16.25in
Vented	No
Material	Carbon steel
Color	RAL 7035 light gray
Finish	Textured powder coat

Agency Approvals

UL Listed File #	None
UL Recognized File #	None
UL Hazardous File #	None
CSA File #	None
RoHS Status	Meets RoHS Chemical Restrictions - No CE (See RoHS Statement Below)
EU REACH	View EU REACH document
Other	RoHS Statement

Dimensional Drawings



2D Drawing PDF Link:
[https://cdn.automationdirect.com/
/static/drawings/RDRW1900716LG1.pdf](https://cdn.automationdirect.com/static/drawings/RDRW1900716LG1.pdf)
See store item page for other formats.