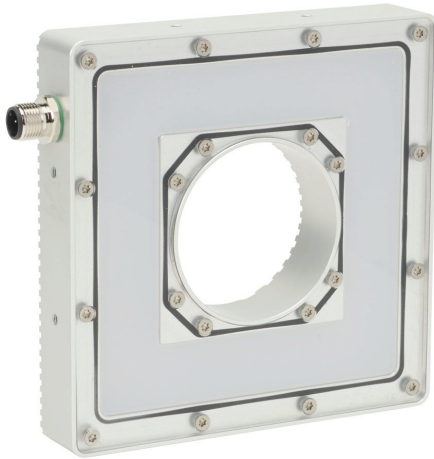


RD1PF5CY Cut Sheet



Lumher RD machine vision lighting, ring light, infrared light emission, plus or minus 30 degrees, continuous, 135 x 135 x 25mm housing, 22.8-25.2 VDC operating voltage.

For complete product information, please see this item on our store at the following link:



<https://www.automationdirect.com/pn/RD1PF5CY>

Technical Specifications

Brand	Lumher
Series	RD
Item	Machine vision lighting
Light Type	Ring light
Light Emission	Infrared
Color Wavelength	850 nm
Beam Angle	Plus or minus 30 degrees
Housing Size	135 x 135 x 25mm
Inside Dimension	59mm diameter

Body Material	Anodized aluminum
Operation Mode	Continuous
Overdrive	No
Operating Voltage	22.8-25.2 VDC
Power Rating	4W
Current Consumption Continuous	0.17A
IP Rating	IP65
Connection	4-pin M12 quick-disconnect

Agency Approvals

UL Listed File #	None
UL Recognized File #	None
UL Hazardous File #	None
CE	View CE declarations
CSA File #	None
RoHS Status	Yes (See CE Doc)
EU REACH	View EU REACH document

Dimensional Drawings



2D Drawing PDF Link:
<https://cdn.automationdirect.com/static/drawings/2d/RD1PF5CY.pdf>
See store item page for other formats.