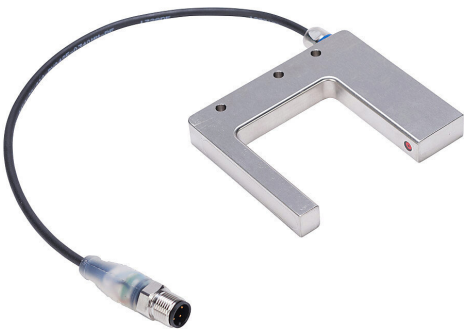


PSUFR-0P-5F Cut Sheet



AutomationDirect photoelectric fork sensor, U-frame, stainless steel housing, through-beam, visible red, 0-50mm sensing distance, 10-30 VDC operating voltage, complementary light-on/dark-on, PNP, 4-pin M12 quick-disconnect.

For complete product information, please see this item on our store at the following link:



<https://www.automationdirect.com/pn/PSUFR-0P-5F>

Technical Specifications

Brand	AutomationDirect
Item	Photoelectric fork sensor
Shape	U-frame
Housing Size	85 x 86 x 12mm
IP Rating	IP67 IP69K
Housing Material	Stainless steel
Sensing Method	Through-beam
Operating Voltage	10-30 VDC

Switching Output	PNP
Sensing Distance	0-50mm
Operation Mode	Complementary light-on/dark-on
Switching Frequency	3 kHz
Light Emission (NP)	Visible red
Cable Length	9.8in/250mm
Connection	4-pin M12 quick-disconnect
Additional Information	Purchase cable separately

Agency Approvals

UL Listed File #	None
UL Recognized File #	None
UL Hazardous File #	None
CE	View CE declarations
CSA File #	None
RoHS Status	Yes (See CE Doc)
EU REACH	View EU REACH document

Dimensional Drawings



2D Drawing PDF Link:
<https://cdn.automationdirect.com/static/drawings/PSUFR-0P-5F.pdf>
See store item page for other formats.