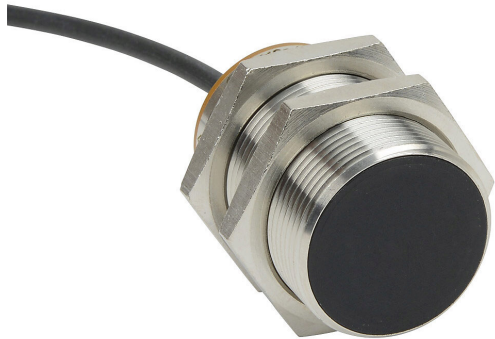


PNT6-AP-3A Cut Sheet



AutomationDirect inductive proximity sensor, tubular, 30mm diameter x 50mm body, bronze-plated brass housing, PNP, N.O. output, 15mm sensing distance, flush, 100 Hz switching frequency, IP65 IP66 IP67 IP68 IP69K, pigtail.

For complete product information, please see this item on our store at the following link:



<https://www.automationdirect.com/pn/PNT6-AP-3A>

Technical Specifications

Brand	AutomationDirect
Item	Proximity sensor
Sensor Type	Inductive
Application	Harsh duty
Shape	Tubular
Housing Size	30mm diameter x 50mm body
Housing Material	Bronze-plated brass
Barrel Type	Threaded
Sensing Method	Extended sensing
Adjustable	No
Number of Wires	3
Switching Output	PNP
Operation Mode	N.O. output

Sensing Distance	15mm
Mounting Type	Flush
IO-Link Compatible	No
Switching Frequency	100 Hz
Operating Voltage	10-30 VDC
Operating Temperature	-40 to 85C
Weld Field Immune	No
Chip Immune	No
IP Rating	IP65 IP66 IP67 IP68 IP69K
Connection	Pigtail
Conductor Size	22 AWG
Cable Length	6.5ft/2m
Includes	Mounting hardware

Agency Approvals

UL Listed File #	E328811
UL Recognized File #	None
UL Hazardous File #	None
CSA File #	None
RoHS Status	Yes (See CE Doc)
EU REACH	View EU REACH document

Dimensional Drawings



2D Drawing PDF Link:
<https://cdn.automationdirect.com/static/drawings/PNT6-AP-3A.pdf>
See store item page for other formats.