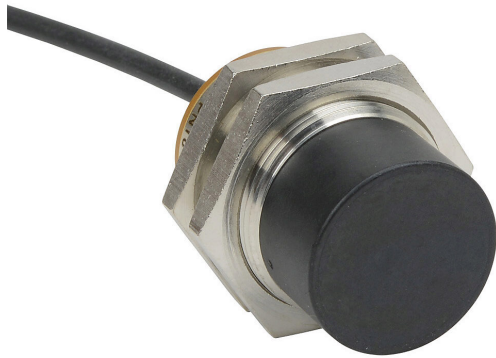


# PNT6-AN-4A Cut Sheet



AutomationDirect inductive proximity sensor, tubular, 30mm diameter x 50mm body, bronze-plated brass housing, NPN, N.O. output, 22mm sensing distance, non-flush, 100 Hz switching frequency, IP65 IP66 IP67 IP68 IP69K, pigtail.

For complete product information, please see this item on our store at the following link:



<https://www.automationdirect.com/pn/PNT6-AN-4A>

## Technical Specifications

<b>Brand</b>	AutomationDirect
<b>Item</b>	Proximity sensor
<b>Sensor Type</b>	Inductive
<b>Application</b>	Harsh duty
<b>Shape</b>	Tubular
<b>Housing Size</b>	30mm diameter x 50mm body
<b>Housing Material</b>	Bronze-plated brass
<b>Barrel Type</b>	Threaded
<b>Sensing Method</b>	Extended sensing
<b>Adjustable</b>	No
<b>Number of Wires</b>	3
<b>Switching Output</b>	NPN
<b>Operation Mode</b>	N.O. output

<b>Sensing Distance</b>	22mm
<b>Mounting Type</b>	Non-flush
<b>IO-Link Compatible</b>	No
<b>Switching Frequency</b>	100 Hz
<b>Operating Voltage</b>	10-30 VDC
<b>Operating Temperature</b>	-40 to 85C
<b>Weld Field Immune</b>	No
<b>Chip Immune</b>	No
<b>IP Rating</b>	IP65 IP66 IP67 IP68 IP69K
<b>Connection</b>	Pigtail
<b>Conductor Size</b>	22 AWG
<b>Cable Length</b>	6.5ft/2m
<b>Includes</b>	Mounting hardware

## Agency Approvals

<b>UL Listed File #</b>	E328811
<b>UL Recognized File #</b>	None
<b>UL Hazardous File #</b>	None
<b>CSA File #</b>	None
<b>RoHS Status</b>	Yes (See CE Doc)
<b>EU REACH</b>	<a href="#">View EU REACH document</a>

## Dimensional Drawings



2D Drawing PDF Link:  
<https://cdn.automationdirect.com/static/drawings/PNT6-AN-4A.pdf>  
See store item page for other formats.