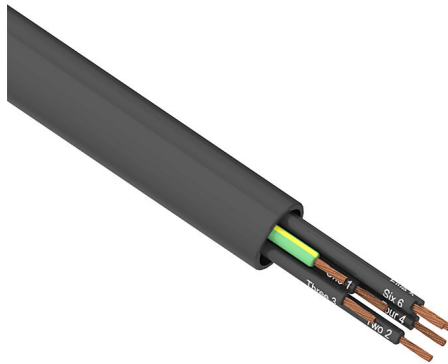


# PMTC-18U-7BK-1 Cut Sheet



Southwire flexible power/control cable, unshielded, 7 conductors (includes ground), 18 AWG, bare copper, PVC/Nylon conductor insulation material, black with white numbers and green/yellow ground, TPE jacket, black, cut to length.

For complete product information, please see this item on our store at the following link:



<https://www.automationdirect.com/pn/PMTC-18U-7BK-1>

## Technical Specifications

<b>Brand</b>	Southwire
<b>Item</b>	Cable
<b>Wire/Cable Type</b>	Power/control
<b>UL Wire/Cable Type</b>	TC, TC-ER, WTTC and MTW
<b>Applicable Standards</b>	ECOLAB
<b>Application</b>	General purpose
<b>Flexibility</b>	Flexible
<b>Voltage Rating</b>	600V (Types TC, TC-ER, MTW), 1000V (Type WTTC)
<b>Conductors</b>	7 conductors (includes ground)
<b>Conductor Size</b>	18 AWG
<b>Conductor Stranding</b>	16-stranded
<b>Conductor Material</b>	Bare copper
<b>Conductor Insulation Material</b>	PVC/Nylon
<b>Conductor Insulation Color</b>	Black with white numbers and green/yellow ground

<b>Shielding</b>	Unshielded
<b>Jacket Material</b>	TPE
<b>Jacket Color</b>	Black
<b>Nominal Overall Cable Diameter</b>	0.36in
<b>Bulk Length</b>	Cut to length
<b>Package Type</b>	<ul style="list-style-type: none"><li>• 20 to 75ft = Coil</li><li>• 76 to 300ft = 14 x 7in Reel</li><li>• 301 to 430ft = 14 x 10in Reel</li><li>• 431 to 660ft = 16 x 10in Reel</li><li>• 661 to 920ft = 18 x 10in Reel</li><li>• 921 to 1195ft = 18 x 13in Reel</li><li>• 1196 to 2680ft = 24 x 17in Wooden Reel</li><li>• 2681 to 4285ft = 30 x 17in Wooden Reel</li><li>• 4286 to 5000ft = Large Wooden Reel</li></ul>

## Agency Approvals

<b>UL Listed File #</b>	E75755
<b>UL Recognized File #</b>	None
<b>UL Hazardous File #</b>	None
<b>CE</b>	None
<b>CSA File #</b>	90458
<b>RoHS Status</b>	Meets RoHS Chemical Restrictions - No CE (See RoHS Statement Below)
<b>EU REACH</b>	<a href="#">View EU REACH document</a>
<b>Other</b>	<a href="#">RoHS Statement</a>