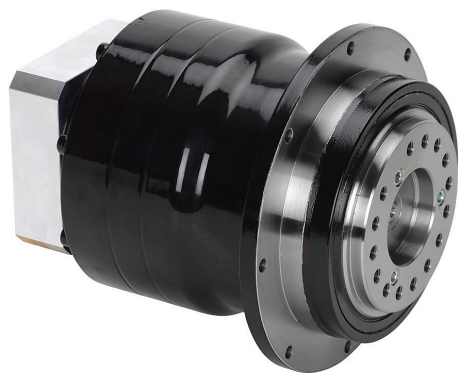


PGD110-25A3 Cut Sheet



SureGear high-precision planetary gearbox, 25:1 ratio, inline with hub style output, nominal output torque 180 N-m (1593 lb-in), 2-stage, 110mm frame. For use with SureServo and SureServo2 SV(2)L-207(B) motors.

For complete product information, please see this item on our store at the following link:



<https://www.automationdirect.com/pn/PGD110-25A3>

Technical Specifications

Brand	SureGear
Item	Gearbox
Application	High-precision
Gearbox Type	Planetary
Gear Ratio	25:1
Output Configuration	Inline with hub style output
Nominal Output Torque	Nominal output torque 180 N-m (1593 lb-in)
Number of Stages	2
Frame	110mm
For Use With	SureServo and SureServo2 SV(2)L-207(B) motors
Includes	Motor mounting hardware

Agency Approvals

UL Listed File #	None
UL Recognized File #	None
UL Hazardous File #	None
CE	None
CSA File #	None
RoHS Status	No
EU REACH	View EU REACH document

Dimensional Drawings



2D Drawing PDF Link:
<https://cdn.automationdirect.com/static/drawings/PGD110-25A3.pdf>
See store item page for other formats.