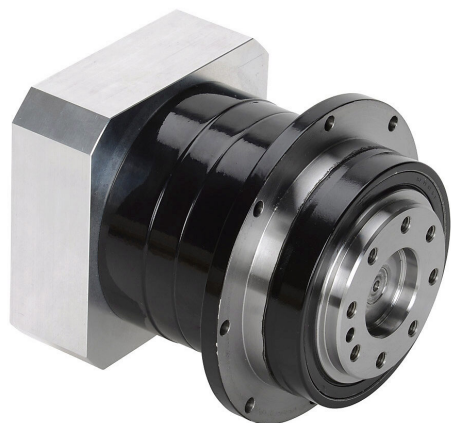


# PGD090-10A4 Cut Sheet



SureGear high-precision planetary gearbox, 10:1 ratio, inline with hub style output, nominal output torque 50 N-m (443 lb-in), 1-stage, 90mm frame. For use with SureServo and SureServo2 SV(2)L-210(B) motors.

For complete product information, please see this item on our store at the following link:



<https://www.automationdirect.com/pn/PGD090-10A4>

## Technical Specifications

Brand	SureGear
Item	Gearbox
Application	High-precision
Gearbox Type	Planetary
Gear Ratio	10:1
Output Configuration	Inline with hub style output
Nominal Output Torque	Nominal output torque 50 N-m (443 lb-in)
Number of Stages	1
Frame	90mm
For Use With	SureServo and SureServo2 SV(2)L-210(B) motors
Includes	Input adapter bushing and motor mounting hardware

## Agency Approvals

UL Listed File #	None
UL Recognized File #	None
UL Hazardous File #	None
CE	None
CSA File #	None
RoHS Status	No
EU REACH	<a href="#">View EU REACH document</a>

## Dimensional Drawings



2D Drawing PDF Link:  
<https://cdn.automationdirect.com/static/drawings/PGD090-10A4.pdf>  
See store item page for other formats.