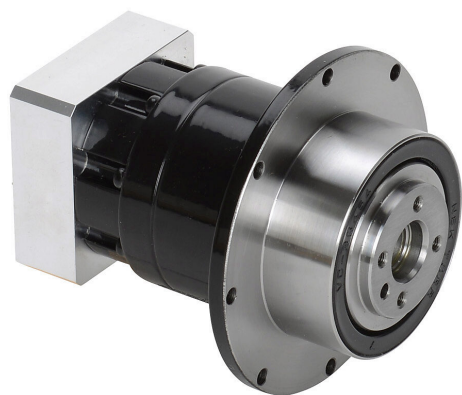


# PGD047-25A1 Cut Sheet



SureGear high-precision planetary gearbox, 25:1 ratio, inline with hub style output, nominal output torque 9 N-m (80 lb-in), 2-stage, 47mm frame. For use with SureServo and SureServo2 SV(2)L-201(B) motors.

For complete product information, please see this item on our store at the following link:



<https://www.automationdirect.com/pn/PGD047-25A1>

## Technical Specifications

Brand	SureGear
Item	Gearbox
Application	High-precision
Gearbox Type	Planetary
Gear Ratio	25:1
Output Configuration	Inline with hub style output
Nominal Output Torque	Nominal output torque 9 N-m (80 lb-in)
Number of Stages	2
Frame	47mm
For Use With	SureServo and SureServo2 SV(2)L-201(B) motors
Includes	Motor mounting hardware

## Agency Approvals

UL Listed File #	None
UL Recognized File #	None
UL Hazardous File #	None
CE	None
CSA File #	None
RoHS Status	No
EU REACH	<a href="#">View EU REACH document</a>

## Dimensional Drawings



2D Drawing PDF Link:  
<https://cdn.automationdirect.com/static/drawings/PGD047-25A1.pdf>  
See store item page for other formats.